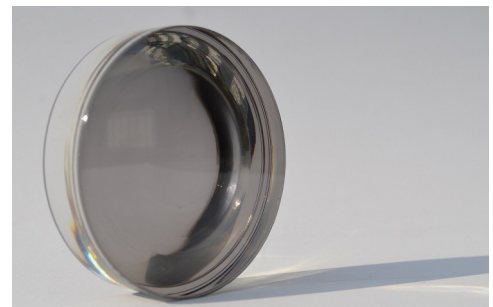




Mineral Photocromatic semi finished Gemini

Titanium semi finished with a grey or brown photocromatic plate glued to the convex surface.

The thickness of the photocromatic plate is 1,50mm and the special glue used guarantee a perfect joining between both surface.



Titanium $n=1,700$; $abbe=34,6$; $\gamma=3,21$

Nominal Base	Radius Convex (mm)	True Base	Radius Concave (mm)	Thickness edge (mm)	Center Thick. (mm)	Diameter (mm)
0	Plano	0,00	-37,00	18,0	3,5	65
2	261,5	2,68	-43,50	16,5	4,5	65
3	175,4	3,99	-52,30	13	4,5	65 / 70
4	130,7	5,36	-65,40	11	4,5	65 / 70

Titanium $n=1,802$; $abbe=34,6$; $\gamma=3,65$

Nominal Base	Radius Convex (mm)	True Base	Radius Concave (mm)	Thickness edge (mm)	Center Thick. (mm)	Diameter (mm)
0	Plano	0,00	-37,00	18,0	3,5	65
2	261,5	3,06	-43,50	16,5	4,5	65
3	175,4	4,57	-52,30	13	4,5	65 / 70
4	130,7	6,15	-65,40	11	4,5	65 / 70

The lenses obtained from Gemini semi finished must reaching center thickness not less than 2,0 mm

for any other information you can contact me directly by mail at :

francesco.battisti@ioda-it.com

*Sales and Customer Service Manager
Francesco Battisti*